

Fruit fly Management: Low-cost Traps & Lures Preparation

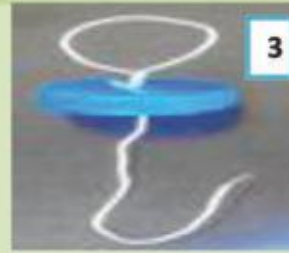


1



2

Make a small hole in the centre of the cap/ lid with a needle.



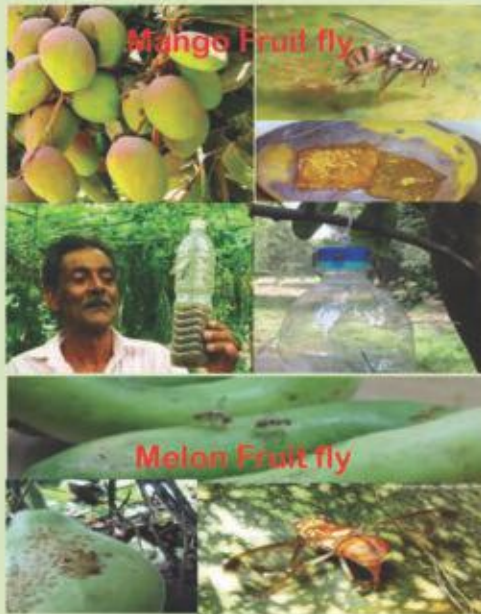
3

Take a thin wire of 10 inches length, make a knot at the centre, insert the wire from inside the cap and make a loop for hanging the bottle & make a hook at the other end for tying lure

Make 3 windows of 1 inch each with a knife at 3 inches from top of used 1 litre water bottle.



8



Mango Fruit fly

Melon Fruit fly



4

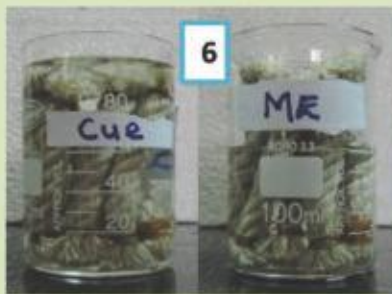
Take ½ inch thick cotton rope & cut the rope into 2 inches size, tie the cut ends with thin wire.

Hang the bottle in shade at least 3-4 feet above ground level at different locations.



7

Remove one third of aluminium foil at the time of use and tie the open end of the lure to the thin wire in the lid



6

Dip the cut cotton rope pieces in ME / Cure lure for 24 hours. Individually wrap the cotton ropes dipped in lure with aluminium foil until use.



5

Preparation of lures - 30 lures @ 4ml /lure

Methyl Eugenol: Mix Ethyl Alcohol- 60 ml + Methyl eugenol-40ml + Malathion/ DDVP (pesticide)- 20ml (i.e. in the ratio of 6:4:2).

Cue Lure: Mix Ethyl Alcohol-60 ml + Cue lure (p-Acetoxyphenylbutanone-2)-40ml + Malathion/ DDVP (pesticide)- 20ml (i.e. in the ratio of 6:4:2).

Lures mixtures are to be prepared in well ventilated room wearing gloves and using separate containers and measuring jars. Cost of ME and Cue lure is approximately Rs.35/- for one bottle trap. DOSAGE - Refer backside of pamphlet

For details contact: Asst. Director - RPM, Plant Biosecurity Division, NIPHM, Hyderabad, Telangana.
Mobile: 09100207342. Email: adrpmniphm-ap@nic.in



NATIONAL INSTITUTE OF PLANT HEALTH MANAGEMENT

Department of Agriculture & Cooperation, Ministry of Agriculture & Farmers Welfare, Govt. of India

राष्ट्रीय वनस्पति स्वास्थ्य प्रबंधन संस्थान

कृषि एवं सहकारिता विभाग, कृषि एवं किसान कल्याण मंत्रालय, भारत सरकार



Attracted to Methyl Eugenol Lure



Mango Fruit fly
Bactrocera dorsalis



Guava Fruit fly
Bactrocera correcta



Peach Fruit fly
Bactrocera zonata



Bactrocera caryeae

Usage of Methyl Eugenol Lure

Crops: Mango, Guava, Papaya, Citrus & all fruit crops

For Monitoring

- No. of lures per KM²: 1
- Timing: **Through-out the year**
- Replacement: **Once in 30 - 40 days**
- Total lures to be used per KM² :
8 - 12/ year

For Area-wide Control

- No. of lures per Acre: 6 - 10
- Timing: **From fruit-set to harvest**
- Replacement: **Once in 30 - 40 days**
- Total lures to be used in a season per acre: 12-20 or 18-30 depending on the crop

Usage of Cue Lure

Crops: Cucumber, Gherkin, Melons, Pumpkin, Bitter gourd, Coccinia (Little gourd), Snake gourd, Ridge gourd, Bottle gourd & other Cucurbitaceous crops and some fruits (Mango, Guava, Sapota, Citrus etc.)

For Monitoring

- No. of lures per KM² : 1
- Timing: **Through-out the year**
- Replacement: **Once in 30 - 40 days**
- Total lures to be used per KM² :
8 - 12/ year

For Area-wide Control

- No. of lures per Acre: 6 - 10
- Timing: **From flowering to harvest**
- Replacement: **Once in 30 - 40 days**
- Total lures to be used in a season per acre: 12-20 or 18-30 depending on the crop

Attracted to Cue Lure



Melon Fruit fly
Bactrocera cucurbitae



Bactrocera tau



Bactrocera nigrofemoralis



Bactrocera caudata